

OVERVIEW OF TECHNOLOGY

Cleaning systems will have: A. Soak; B. Wash; C. Rinse, and D. Drying cycles. After considering: effectiveness; cost of purchase; cost and ease of operation; contaminants; maintenance; operating cost; space; throughput, and impact on the environment, the Nelson Cleaning Technology elegantly and effectively combines the Soak and Wash cycles in the Jewelshine® Multi-Herz Ultrasonic, and the Rinse and Dry cycles in the Steamshining process. The Steamshine® Regalia model, in many instances, eliminates the need for the Soak and the Wash cycles, while improving the treated surface.

JEWELSHINE® ULTRASONIC TECHNOLOGY:

It is widely known, some parts to be cleaned as well as some contaminants respond better to a specific frequency cavitation than others. The Ultrasonic Cleaning Technology we offer overcomes this shortcoming; in fact, Jewelshine® Ultrasonics have a "Clean and Brush" action, due to the different size cavitation they produce. Heat promotes cavitation, because the wetting agents in the Jewelshine® Ultrasonic Concentrate are better activated. The heavy-duty transducers in our ultrasonics are very powerful and operate at high amplitude, therefore do not leave any item on the bottom of the tank.

STEAMSHINE® STEAM CLEANING TECHNOLOGY:

After the item to be cleaned has been in the ultrasonic for 30 to 60 seconds, it is ready for the Rinse and the Dry cycles with the Steamshine®. Steamshining uses heat and pressure to remove the tarnish creating substances left on the item after ultrasonic cleaning. Steamshining leaves the item dry and ready to be displayed, sold, or shipped. Used together, these two methods represent the best possible way of cleaning: the ultrasonic loosens the dirt and tarnish, and Steamshine® removes the dirt and tarnish, rinses and dries, so that the items will look their best and will increase sales and customer satisfaction.

CLEANING PROCEDURE:

- Step 1.** Position the item to be cleaned on the coated rack so that it does not touch any other item or the ultrasonic tank.
- Step 2.** Insert the rack or Spring Action Tweezers into the ultrasonic and let it run for 30 to 90 seconds maximum.
- Step 3.** Remove the rack or Spring Action Tweezers from the ultrasonic.
- Step 4.** For better cleaning, hold the item to be Steamshined approximately ¼" or closer below the steamjet. Press the foot switch repeatedly for bursts of about 10 seconds each. If the piece is not perfectly clean, repeat steps 1 through 4. Hold temperature-sensitive items further away from the nozzle!

CAUTION: Make sure the item does not dry between the ultrasonic and Steamshine®, to avoid leaving marks. Ultrasonic cavitation is a powerful process and it could dismantle items with cracks or cleavage lines. For these items cleaning should be done carefully by hand.

**STEAMSHINE® & JEWELSHINE® ARE THE WORLD'S BEST
CLEANING PRODUCTS AT ANY PRICE: STEAMSHINE® &
JEWELSHINE® REALLY SHINE!**

MAKE THE MOST OF IT!

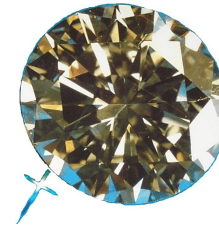
12 ©Copyright 1998 A.D. to 2022 A.D. CD Nelson Consulting & Co LLC. All Rights Reserved www.cdnelson.com

Jewelshine® & Steamshine®, The Winning Combination

Lets you have your 15 minutes of fame
every time a customer walks into your store!

**You Have Chosen Wisely, Shine On.
Live Long and Prosper!**

Our Customers Are Brilliant



**We Make
Them Shine!**

**JEWELSHINE® & STEAMSHINE®
THE WINNING COMBINATION
OWNER'S MANUAL**

**UNDERSTANDING THIS MANUAL WILL GREATLY INCREASE
PERFORMANCE IN CLEANING, AND LONGEVITY OF THE UNIT,
AS WELL AS YOUR JOB & CUSTOMER SATISFACTION.**



CD Nelson Consulting & Company LLC
Changing the World for Better

Phone: (815)759-2828 Fax: (815)759-2826 e-mail: cn999@aol.com

Call Us Toll-Free: 877/684-8508

Please visit us at: www.cdnelson.com home of
FREE domestic shipping

SUPER WARRANTY

Congratulations! You are now the owner of the finest, best Cleaning System available at any price on the world market today!

Steamshine™ is the only steam cleaner on the market to guarantee to CLEAN, SHINE, and TO NOT BREAK, CRACK, CHIP, or INDUCE COLOR CHANGES DUE TO RUST PARTICLES or FEROXIDES.

Your unit has been manufactured from the finest components available today, and adjusted and tested by highly qualified engineers; it has been carefully packaged, and it will give you excellent service throughout the years to come. The unit is warranted for one full year from the date of purchase against defective parts and workmanship (provided we have your Warranty Registration on file, and the Serial Number Label is present and unaltered). **No cash refunds will be given, only exchanges or store credit. A restocking fee might apply for items returned for in-store credit.**

This limited warranty applies only to the replacement of any of the unit's defective parts and components; it does not include any damages resulting from the use of the unit or lack of the regular and periodic maintenance (See Maintenance and Cleaning Procedure). NO PRODUCT MODIFICATION or REPAIR BY THE CUSTOMER IS ALLOWED OR PERMITTED, OTHER THAN FACTORY-INSTALLED OPTIONS or REPAIRS: ATTEMPT TO REPAIR by UNAUTHORIZED PERSONS VOIDS THE WARRANTY AND CAN CAUSE SERIOUS INJURY.

Should your unit develop any defect, immediately unplug it, and contact:

CD Nelson Consulting & Company LLC.

Phone: 815/759-2828 Fax: 815/759-2826 e-mail: CN999@aol.com

DO NOT ATTEMPT TO USE A DEFECTIVE OR MALFUNCTIONING UNIT, FOR IT MAY CAUSE IRREVERSIBLE DAMAGE TO THE UNIT, PEOPLE, OR PROPERTY.

SAFETY IS OUR #1 PRIORITY!

Extended warranties are available at a cost equal to 10% of the cost of a new unit, to be paid annually.

Rental units are available at a cost of \$1.99 per day plus security deposit.

Shipping, Shipping materials, Shipping insurance, and Handling, will be paid by the customer, both to and from the Service Center in all instances.

This written warranty is in lieu of all other warranties, expressed or implied, including merchantability and fitness for a particular purpose. The company's sole liability with respect to defective parts will be as set forth in this warranty, and any claims for consequential or incidental damage resulting from any defect are absolutely excluded. The company reserves the right to change, improve or modify its products without obligation whatsoever to make or install such changes, improvements, or modifications on any products previously manufactured by us.

JEWELRY CLEANING GUIDE

<u>PRECIOUS STONE</u>	<u>ULTRA-SONIC</u>	<u>STEAM-SHINE®</u>	<u>BOILING</u>	<u>OTHER</u>
<u>Amber</u>	<u>No</u>	<u>No</u>	<u>No</u>	<u>Warm Water, Mild Detergent</u>
<u>Amethyst</u>	<u>Yes</u>	<u>Yes</u>	<u>No</u>	<u>Not Needed</u>
<u>Aquamarine</u>	<u>Yes</u>	<u>Yes</u>	<u>No</u>	<u>Not Needed</u>
<u>Citrine</u>	<u>Yes</u>	<u>Yes</u>	<u>No</u>	<u>Not Needed</u>
<u>Coral</u>	<u>No</u>	<u>No</u>	<u>No</u>	<u>Warm, Mild Soap Solution & Soft Brush</u>
<u>Diamond</u>	<u>Yes</u>	<u>Yes</u>	<u>Yes</u>	<u>Not Needed</u>
<u>Emerald</u>	<u>No</u>	<u>No</u>	<u>No</u>	<u>Warm, Mild Soap Solution & Soft Brush</u>
<u>Garnet</u>	<u>Yes</u>	<u>Yes</u>	<u>No</u>	<u>Not Needed</u>
<u>Jade</u>	<u>Yes</u>	<u>Yes</u>	<u>No</u>	<u>Not Needed</u>
<u>Lapis</u>	<u>No</u>	<u>Yes</u>	<u>No</u>	<u>Warm, Mild Soap Solution & Soft Brush</u>
<u>Opal</u>	<u>No</u>	<u>No</u>	<u>No</u>	<u>Warm, Mild Soap Solution</u>
<u>Pearl</u>	<u>No</u>	<u>No</u>	<u>No</u>	<u>Soft-cloth wipe; mild soap solution cloth</u>
<u>Peridot</u>	<u>No</u>	<u>No</u>	<u>No</u>	<u>Warm, Mild Soap Solution & Soft Brush</u>
<u>Ruby</u>	<u>Yes</u>	<u>Yes</u>	<u>No</u>	<u>Not Needed</u>
<u>Sapphire</u>	<u>Yes</u>	<u>Yes</u>	<u>No</u>	<u>Not Needed</u>
<u>Spinel</u>	<u>Yes</u>	<u>Yes</u>	<u>No</u>	<u>Not Needed</u>
<u>Tanzanite</u>	<u>No</u>	<u>No</u>	<u>No</u>	<u>Warm, Mild Soap Solution & Soft Brush</u>
<u>Topaz</u>	<u>No</u>	<u>Yes</u>	<u>No</u>	<u>Watch for cleavage in material</u>
<u>Tourmaline</u>	<u>Yes</u>	<u>Yes</u>	<u>No</u>	<u>Not Needed</u>

PROBLEM SOLVING CHART **FOR JEWELSHINE®**

PROBLEM

SOLUTION

Water does not cavitate well.

**Solution level is too high.
Solution is contaminated and needs changing.
Distilled water is being used:
distilled water does not couple well with transducers; use tap water.
Use less detergent.
Ultrasonic needs repair.**

Water evaporates too fast.

**Set thermostat to a lower temperature.
Place lid on top of the tank when not in use.**

Water is agitated, tank has good cavitation, but items are not cleaned well or fast enough.

**Jewelshine® detergent is not heat-activated: set thermostat to 70°C.
Add detergent or replace solution.**

Cleaned items change color in time, even 18K gold.

**Solution is contaminated with feroxides. To remedy remove all carbon steel accessories and change solution.
Rinse item thoroughly.**

The item being cleaned develops flat spots and loses luster.

Make sure items do not touch each other and the cavitation does not allow them to rub against one other.

Jewelry is being dismantled, there are fallen stones.

Reduce time in the ultrasonic.

General flat or dull appearance of thin items, i.e. electroformed jewelry and the like

Reduce time in the ultrasonic.

SPECIAL PRECAUTIONS

Please instruct all personnel using the unit, to read this Owner's Manual, in order to insure safe operation of the unit: do not allow anyone to operate the unit unless they have been instructed. Install the unit on a solid table or surface.

For Steamshine®: install the unit's Foot Switch in a place where it will not be accidentally touched.

Service for your unit can be done only by authorized representatives of CD Nelson Consulting & Co LLC. Service by anyone else may result in property damage or personal injury, and it will void the warranty.

There are no user-serviceable parts on or inside the unit.

UNPACKING

At the factory, your unit was carefully manufactured, assembled, tested, inspected, and packaged. In the event of visible or concealed damage:

- 1. Do Not Attempt to Use the Unit;**
- 2. Immediately Notify CD Nelson Consulting & Co LLC;**
- 3. Save the Box in Which the Unit Arrived.**

INITIAL INSTALLATION

Find a stable, solid surface for your unit, preferably near the polishing/cleaning area.. Leave at least 2" free around the unit for proper air circulation.

For Steamshine® : place the Foot Switch where it will not be accidentally pressed. The SteamJet Nozzle should be placed above a sink or a Splash Pan, to collect the condensation created in the cleaning process. Splash Pans are specially designed for reducing splash-back: see the Steamshine® literature for details.

For Jewelshine®: Install the plastic drain assembly tightly so that the cleaning solution will not drip between the stainless steel tube coming out from the bottom of the unit, and the plastic draining hose assembly. Push firmly the plastic stop onto the transparent tube to close the drain of the ultrasonic unit.

Plug the unit in any standard GROUNDED and GFI protected electrical outlet, 120 V / 220V, 15 Amps. Modification of the product in any way can be done **ONLY AT THE FACTORY.**

IMPORTANT NOTICE

Units left on our premises for more the 14 days are subject to a daily storage fee of \$1.99/day. Units left for more than 90 days are considered abandoned and will be disposed of.

WARNINGS

1. AVOID CONTACT WITH HOT UNIT, AS SEVERE BURNS MAY RESULT.
2. ALL MODELS MUST BE FILLED WITH WATER DAILY.
3. DO NOT USE, OR LEAVE THE UNIT ON, WHEN EMPTY.
4. ALL UNITS MUST BE PLUGGED ONLY IN GROUNDED ELECTRICAL OUTLETS WITH GROUND FAULT INTERRUPTERS.

FOR STEAMSHINE®:

1. NEVER ADD WATER TO A HOT UNIT.
2. DO NOT OPEN ANY VALVES WHEN UNIT IS HOT OR PRESSURIZED.
3. WHEN THE UNIT IS LOW IN WATER, PRESSURE DROPS QUICKLY.
4. ALL UNITS MUST BE CLEANED AT LEAST ONCE A YEAR, EVEN WHEN DE-IONIZED, DISTILLED, or RO WATER IS USED.

FOR JEWELSHINE®:

1. NEVER LET THE WATER LEVEL DROP BELOW 1-3/4" FROM TOP.
2. DO NOT DRAIN THE UNIT WHEN HOT. FIRST, TURN THE THERMOSTAT TO ZERO, ALLOW THE WATER TO COOL OFF, THEN DRAIN AND REPLACE WATER.
3. ALWAYS KEEP LID ON, UNLESS UNIT IS IN USE.
4. CLEAN THE UNIT REGULARLY ESPECIALLY AROUND THE WATER LEVEL WHERE GREASE TENDS TO ACCUMULATE.
5. USE ONLY TAP WATER. DO NOT USE SOLVENTS, FLAMMABLE LIQUIDS, OR DISTILLED WATER.

GLOSSARY OF TERMS

Shinemaster™ Diamond-based Buffing Compound is the concentrate we provide for use in the REGALIA™, Nobilia™ and Lotus™ with Shinemaster™ option Steam Cleaning system;
Steamshining is the steam cleaning process using the Steamshine® system;
Steampolishing is the polishing process using Steamshine® and Shinemaster™ compound;
Splash Pan is the specially designed tray for collecting condensation under the SteamJet Nozzle.

JEWELSHINE® DAILY REMINDERS

- ◆ Always use Jewelshine® Cleaning Concentrate: 1 to 1-½ fluid ounce per quart of water. It is the best for your jewelry, for your environment, it is biodegradable and non-toxic. If you do not have Jewelshine® Concentrate, use Johnson's Baby Shampoo in the same proportion.
- ◆ Always keep tank full to 1-¼" from top.
- ◆ Leave the unit on for 5-15 minutes for degassing every morning: efficient and fast cleaning can take place only after this time.
- ◆ Clean and de-grease the sides of the tank every time you change cleaning solution, so you will not contaminate the new liquid.
- ◆ Turn of the heater at least 30 minutes before emptying the tank.
- ◆ Jewelshine® is pH balanced. DO NOT USE SOLVENTS, FLAMMABLE LIQUIDS OR DISTILLED WATER.
- ◆ Do not immerse the ultrasonic unit in liquid, and always keep the surrounding area dry and clean.

JEWELSHINE® DAILY FILL PROCEDURE

1. After you clean and de-grease the tank with alcohol, Windex, or dish detergent, fill the unit with tap water approximately 1 to 1¼" from the top or to the lower part of the marks in the corners of the tank.
2. Add Jewelshine®concentrate, 1 to 1.5 fl. oz. per quart of water, dispersing evenly in the tank.
3. Turn the unit on for 5 to 15 minutes for degassing. Turn the thermostat to 70°C.
4. If you need to replace the solution more than once a day, we suggest you purchase an additional Jewelshine® unit, or trade in your existing unit for a larger one.

JEWELSHINE® MAINTENANCE AND CLEANING PROCEDURE

1. Turn off both thermostat and timer at least 30 minutes prior to cleaning.
2. Push toward the end the plastic stop and filter the water through a paper coffee filter to collect loose stones, platinum, gold or silver particles: this alone will pay for the ultrasonic unit, Jewelshine® concentrate and the labor to operate it.
3. With a paper tissue such as Kleenex, wipe the tank and clean thoroughly around the water level where grease tends to accumulate. Save this tissue along with the paper coffee filter for refining.
4. Replace the water and add fresh Jewelshine® concentrate 1 fl. oz. per quart of water.

Congratulations: you now have your own mini-gold mine! Make the most of it!

PROBLEM SOLVING CHART FOR STEAMSHINE® Regalia, Nobilia, & Lotus

PROBLEM

SOLUTION

Steam is too wet even with the toggle switch in off position or the throttle valve closed.

Unit is overfilled: press the foot switch to unload excess water, until steam is normal.

Pressure drops too fast even after letting out the hot air with first use at start.

Unit is nearly empty: turn off, allow to cool and fill. If you need to fill the unit more than once a day, purchase the next larger model.

Steam escapes from the SteamJet nozzle or from the air release valve.

Clean the unit following this Instruction Manual's Maintenance & Cleaning Procedure.

It takes too long to obtain the high polish luster.

Clean the ultrasonic tank, especially around the water level mark where grease tends to accumulate, and fill with fresh water & Jewelshine™ super concentrate; clean the Steamshine™ unit.

What Matters Most: Cleanliness Is Next To Godliness!

Cleanliness is the single most important aspect of your business! This is true if you are a fine jeweler, dentist, dental technician or medical doctor, and it is true if you just clean photovoltaic solar panel lenses or anything in between. This is why we try to explain in detail how to use the system. It is magic when you sell that special engagement diamond and the customer falls in love with it at first glance, or the optics of your endoscopic equipment let you see all you need clearly; there is no magic like having the confidence that your crowns will not change color due to ferroxides or other contaminants!

If you polish: use green, white, or blue water soluble polishing or buffing compound: red buffing compound or rouge is made of ferroxides otherwise known as finely ground rust! Wax based buffing compounds tend to burn on the polished surface. Use high speed and the largest buffing wheel you can fit on your polishing machine; on silver use lower speed so you will not "burn" the surface of the metal. After buffing, immerse the item to be cleaned in a ultrasonic, using a PH-balanced solution like Jewelshine® or use Johnson's Baby Shampoo in the same proportion as Jewelshine®. Invest in good ultrasonic: we recommend Jewelshine® Multi-Herz, it will pay high dividends: THERE IS NOTHING BETTER!

When you first fill the ultrasonic with water after you added the detergent 1 fl. oz. per quart of water, let the ultrasonic run for 5 to 15 minutes in order to eliminate the oxygen and chlorine from water. Set the thermostat at 60-70° Celsius and cover the tank: keep the lid on except when the unit is in use. If water evaporates, add water only without detergent.

Use only tap or filtered water: DO NOT USE DISTILLED WATER. Distilled water does not couple well with the transducers, the driving force in cavitation. If large items are cleaned, you can use a second ultrasonic for rinsing, or just a container with plain or distilled water. Steam cleaners are distillers and condensed steam is the purest form of distilled water, provided you have our steam cleaner, made of stainless steel including the tank.

As with any machinery, the life expectancy and performance of your unit will be greatly affected by your care in handling and maintaining it. Here, at CD Nelson Consulting & Company LLC, we put the best of everything in each unit before it leaves our company: design, materials, manufacturing process, assembly, adjusting, testing, packaging.

STEAMSHINE® DAILY FILL PROCEDURE

1. Open the Fill Valve by turning it counter clockwise. DO NOT ADD ANY TYPE OF DETERGENT or CHEMICAL other than Diamond-based Shinemaster™ Buffing Compound. For Steamshine® units with the polishing Shinemaster™ option, add one or two capfuls of the Diamond-based Shinemaster™ Buffing Compound to every gallon of water.
2. Open the Air Release Valve on the back: slide forward the safety lock and turn the handle counter clockwise, quarter turn. Place Splash Pan under the Air Release Valve.
3. Add water until it drips out from the Air Release Valve.
For Plus models, add water until the Low Water Level light turns off.
4. When the water stops dripping, close the Air Release Valve, and the Fill Valve.
5. Turn on the Steamshine®; let it build operating pressure of 65 PSI +/- 10 PSI. Our new, state-of-the-art Pressure Switch will control the pressure shown on the Pressure Gauge within a range of: Low, 55 PSI and High, 80 PSI in Regalia, Nobilia and Deluxe models.
It is normal for the pressure to drop at first use, after filling. Saturated steam will build only after the air is eliminated from the Steamshine®.
6. For Regalia units: the Steampolish tank will remain permanently filled with the Diamond-based Shinemaster Buffing Compound; in time, the concentration of the compound will diminish with use. Therefore, it is necessary, once or twice a year, to completely empty this tank too for cleaning and replenishing the Diamond-based Shinemaster Buffing Compound.
7. For Auto Fill models: set timer 30 minutes before the work day starts, so that the unit will be at operating pressure at the beginning of each day.
8. If you need to fill the unit more than once a day, purchase a larger unit. You can trade in your unit, and for the first year you might receive 100% trade-in value.

STEAMSHINE® MONTHLY MAINTENANCE and CLEANING PROCEDURE

1. Turn off, unplug the unit and let it cool off completely..
2. Open the Fill Valve and the Air Release Valve.
3. Tip the unit on its back with the air release valve toward the bucket or water-collecting dish. On CL9001 open the drain valve.
- 4..Allow all the water to drain out through the Air Release Valve.
5. If the drained water is not completely clean and clear, fill the unit with warm water, rinse, and repeat steps 3 through 5 until the rinse water is completely clean and clear. If the water is very contaminated, clean the unit bimonthly.
6. Return the Steamshine®to the upright position, and fill it by following the instructions under Daily Fill Procedure.
7. For best results, send your Steamshine® unit to the factory for the yearly cleaning, testing, and tune-up.

WARNING: Turning the unit upside down or any other than recommended position may bring the contaminants into the valves!

USING THE STEAMSHINE® REGALIA™

For exceptional, unsurpassed results, follow these simple steps:

Step 1. Turn on the toggle switch, located next to the main switch, and open the throttle valve to obtain the desired amount of compound injected in the SteamJet. Hold the item to be buffed as close as possible to the SteamJet nozzle at a sharp angle, and cover the surface of the object with this method. If you want to buff under the already-set stones make sure the buffing compound reaches this area.

Step 2. After you obtain the desired appearance turn off the toggle switch and repeat the procedure, for rinsing off any buffing compound residue. Keep temperature-sensitive objects such as plastic, or some colored stones, at 1" or 2" distance from the SteamJet nozzle.

USING STEAMSHINE® Nobilia & Shinemaster

For cost considerations, Nobilia™ models use the same tank for water and buffing compound, with almost similar results as Regalia™: it will take longer to buff. For excellent results, follow these simple steps.

Step 1. Turn on the toggle switch, located next to the main switch, and open the throttle valve to obtain the desired amount of compound injected in the SteamJet. Hold the item to be buffed as close as possible to the SteamJet nozzle at a sharp angle, and cover the surface of the object with this method. If you want to buff under the already-set stones make sure the buffing compound reaches this area.

Step 2. After obtaining the desired appearance turn off the toggle switch and repeat the procedure for rinsing off any buffing compound. Keep temperature-sensitive objects such as plastic, or some colored stones, at 1" or 2" distance from the SteamJet nozzle.

USING THE STEAMSHINE® LOTUS

Hold the item to be cleaned close to the SteamJet nozzle and cover the entire surface with the SteamJet. Keep temperature-sensitive objects such as plastic, or certain colored stones, at 1" to 2" distance from the SteamJet nozzle.

STEAMSHINE®: THE BEST PRECISION CLEANING FOR JEWELRY, DENTAL & MEDICAL INDUSTRIES WORLDWIDE, ALSO SAVES YOU OVER \$5,000 IN ENERGY COST DURING THE LIFETIME OF THE PRODUCT.

MAKE THE MOST OF IT!